

# SEC 150 Assignment: DSL on VMWare Player

Titus Barik (tbarik@staff.waynecc.edu)

Version 1.0

## 1 Project Description

In this assignment, you will load Damn Small Linux (DSL) on VMWare Player. You can download the VMWare image for Damn Small Linux from Moodle ([dsl-4.4.10-vmx.zip](#)). You will also need WinSCP to transfer files between your machine and the virtual machine. The advantage and disadvantage, depending on the application, is the DSL is a live Linux distribution. This means that the system will go back to its original state by simply rebooting the system. In later assignments, we will use Linux distributions where this is not always the case.

Upon completion of this project, you will have a simple, though functional Linux distribution which you can use to become familiar with the basic Linux commands. You will also have a secure, virtual machine environment from which to test your security projects.

## 2 Pre-Requisites

You should watch the lecture videos associated with this project. You will need both VMWare Player and WinSCP installed before starting this assignment.

If you're uncomfortable with Linux (or need a review), use the "The Linux Command Line", a freely available PDF book, designed for the new command line user. Keep this reference with you when working with DSL.

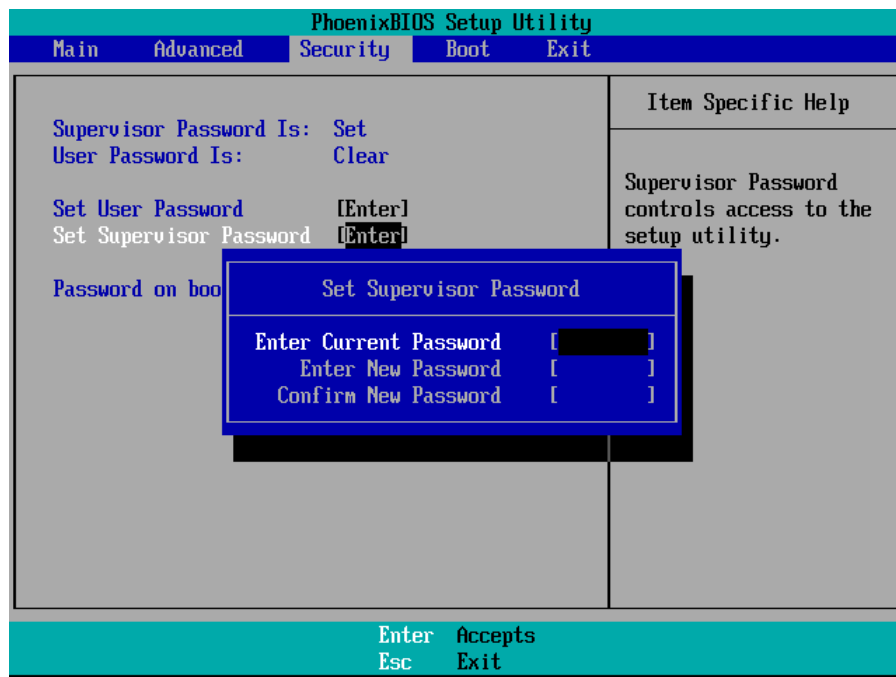
Before downloading any packages for DSL, note that the MyDSL repository location has changed. This means that you will need to make the following changes at DSL startup (every time you reboot) in order to download packages over the net. Specifically, you will need to complete the following steps:

1. Edit the file `/opt/.dslrc` (you can use the text editor `nano` to do this).
2. Change the Mirror line to point to:  
`distro.ibiblio.org/pub/linux/distributions/damnsmall/`

### 3 Instructions

1. Boot the DSL distribution from within VMWare.
2. Set the BIOS password to `sec150`, then submit the `nvr` file and `/etc/protocols` file from within DSL. The `nvr` is used to save your BIOS settings in VMWare.
3. On fast machines, the BIOS (F2 key) can be nearly impossible to enter in time. Instead, you must see “Accessing the BIOS when the POST screen clears too quickly”<sup>1</sup> and edit the `vmx` file manually with `bios.forceSetupOnce = "TRUE"`.

If your mouse and keyboard appear to get ”stuck” within the VMWare Player, remember that you can use CTRL + ALT to bring the peripherals back to the host system.



### 4 Milestone

Submit a screen capture demonstrating that you have VMWare Player installed on your system.

### 5 Submission

Submit your `nvr` file and your `/etc/protocols` file. You do not need to zip the files.

---

<sup>1</sup><http://kb.vmware.com/kb/1004129>